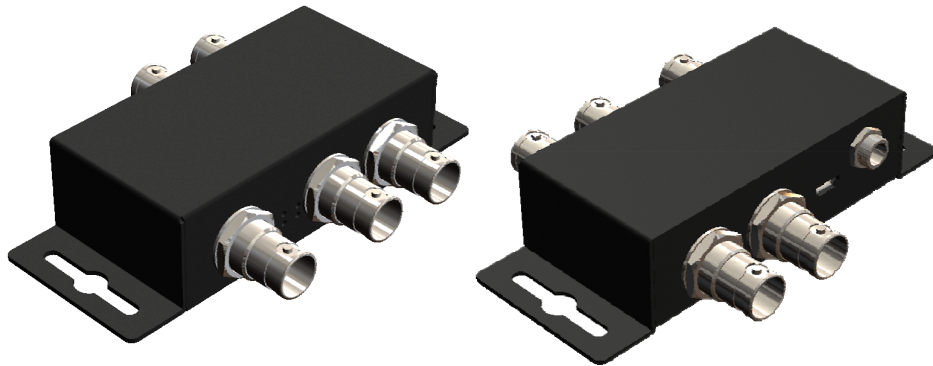


SP-3004KG

1x4 12G/6G/3G/HD/SD-SDI Distribution Amplifier with Reclocking

User Manual



rev: 181220
Made in Taiwan



Safety and Notice

The **SP-3004KG 1x4 12G/6G/3G/HD/SD-SDI Distribution Amplifier with Reclocking** has been tested for conformance to safety regulations and requirements, and has been certified for international use. However, like all electronic equipments, the **SP-3004KG** should be used with care. Please read and follow the safety instructions to protect yourself from possible injury and to minimize the risk of damage to the unit.

- Follow all instructions and warnings marked on this unit.
- Do not attempt to service this unit yourself, except where explained in this manual.
- Provide proper ventilation and air circulation and do not use near water.
- Keep objects that might damage the device and assure that the placement of this unit is on a stable surface.
- Use only the power adapter and power cords and connection cables designed for this unit.
- Do not use liquid or aerosol cleaners to clean this unit. Always unplug the power to the device before cleaning.



TABLE OF CONTENTS

INTRODUCTION	1
FEATURES	1
PACKAGE CONTENTS	1
SPECIFICATIONS.....	2
PANEL DESCRIPTIONS.....	3
HARDWARE INSTALLATION.....	4
WARRANTY	5
SIGNAL MEASUREMENT	6

INTRODUCTION

The **SP-3004KG 1x4 12G/6G/3G/HD/SD-SDI Distribution Amplifier with Reclocking** receives one SDI input, perfectly duplicates it, and re-transmits four SDI outputs for real time multi-viewing. It is a reliable video device splitting a SDI, HD-SDI, 3G-SDI, 6G-SDI, or 12G-SDI video source to four SDI compliant displays at the same time.

FEATURES

- 12G/6G/3G/HD/SD-SDI distribution
- Four separately buffered and reclocked outputs*
- Cable equalization and signal retiming
- LED indication of signal lock and video rate
- Passes ancillary data and embedded audio
- Provides automatic input cable equalization (Belden 1694A) up to 180m (594ft)@3G, 100m (330ft)@6G and 70m(230ft) @12G
- Reclocking SDI signals for cascading and thus longer transmission
- Inter-locked power supply for better fixedness



*Due to the super high frequency and lower jitter requirement for 12G SDI signals, to have the best performance, it is strongly recommended to use one 75 ohm terminator if the paired SDI is not in use.

Please see the following table for 12G SDI output pairing.

Table #1

	Output Port
Pair A	Output 1 & 2
Pair B	Output 3 & 4

PACKAGE CONTENTS

- 1x SP-3004KG
- 1x 5V power adapter
- 1x BNC 75 ohm terminator
- 1x User Manual

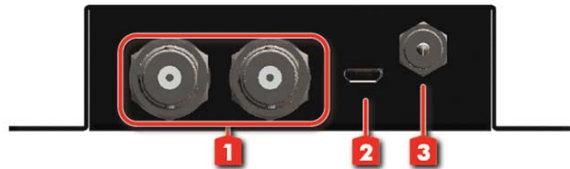
SPECIFICATIONS

Model Name	SP-3004KG	
Technical		
SDI standard	SD/HD/3G/6G/12G-SDI	
Multi-Rate Support	Auto detection of SD, HD, 3G, 6G or 12G Signals	
SDI Compliance	SMPTE 424M, SMPTE 292M, SMPTE 344M, SMPTE 259M, DVB-ASI, ST-2081(6G), ST2082(12G)	
SDI Data rates	1.485 / 2.97 / 5.94 / 11.88 Gbps	
Video bandwidth	[11.88Gbps & 11.88/1.001Gbps]	
Output impedance	75Ω	
Reclocking	Yes	
Cable equalization	[12G] up to 70m (230ft) [6G] up to 100m (330ft) [3G] up to 180m (594ft)	
Audio support	Yes	
RP-198 pathological patterns	Immune	
PCB stack-up	4-layer board [impedance control — differential 100Ω; single 75Ω]	
Input	1x BNC [SDI]	
Output	4x BNC [SDI]	
BNC connector	75Ω inter-locked socket	
Eye pattern characteristics[12G]	Amplitude: Within 800mV (<10%) Rise/Fall time: Less than 35ps	Timing jitter: <1.0 UI (10Hz to 1188MHz) Alignment jitter: <0.3 (100KHz to 1188MHz)
Mechanical		
Housing	Metal enclosure	
Dimensions [L x W x H]	Model	77 x 42 x 28 mm [3" x 1.7" x 1.1"]
	Package	198 x 137 x 74mm [7.8" x 5.4" x 2.9"]
	Carton	420 x 400 x 300mm [1'4"x 1'3" x 11.8"]
Weight	Model	119g [4.2 oz]
	Package	346g [0.7 lbs]
Fixedness	Inter-locked power supply	
Power supply	5V 1A DC	
Power consumption	3 Watts [max]	
Operation temperature	0~40°C [32~104°F]	
Storage temperature	-20~60°C [-4~140°F]	
Relative humidity	20~90% RH [no condensation]	



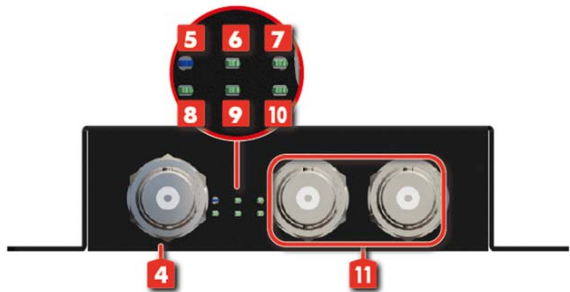
The measurement results are from Phabrix QX with SDI through 1m (3.3ft) long Belden 1694A.

Front Panel



- 1. 12G/6G/3G/HD/SD-SDI output
- 2. Micro-USB for F/W update
- 3. 5V DC power jack

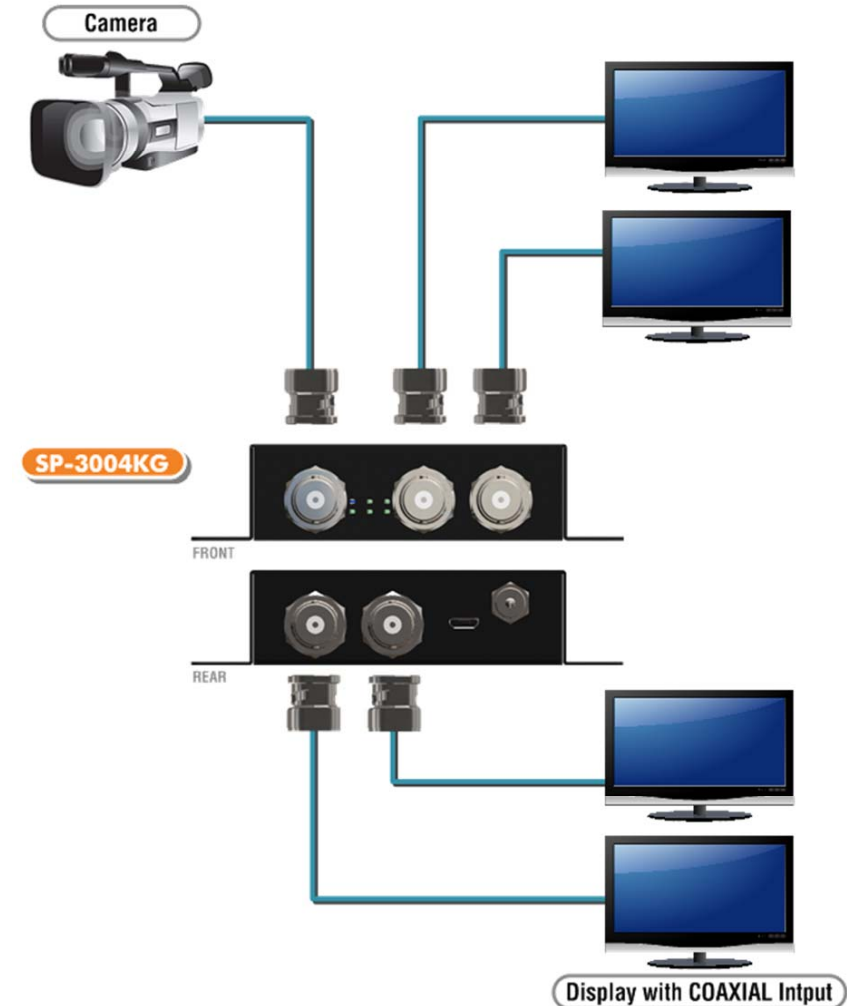
Rear Panel



- 4. 12G/6G/3G/HD/SD-SDI input
- 5. Power LED indicator
- 6. 12G Signal LED indicator
- 7. 6G Signal LED indicator
- 8. 3G Signal LED indicator
- 9. HD Signal LED indicator
- 10. SD Signal LED indicator
- 11. 12G/6G/3G/HD/SD-SDI output

1. Connect a camera or other devices equipped with 12G/6G/3G/HD/SD-SDI outputs to SP-3004KG 12G/6G/3G/HD/SD-SDI input.
2. Connect devices equipped with 12G/6G/3G/HD/SD-SDI inputs (e.g. monitors or video processors) to SP-3004KG 12G/6G/3G/HD/SD-SDI outputs.
3. Plug power adapter cable into 5V DC power jack.

COAXIAL



WARRANTY

The SELLER warrants the **SP-3004KG 1x4 12G/6G/3G/HD/SD-SDI Distribution Amplifier with Reclocking** to be free from defects in the material and workmanship for 1 year from the date of purchase from the SELLER or an authorized dealer. Should this product fail to be in good working order within 1 year warranty period, The SELLER, at its option, repair or replace the unit, provided that the unit has not been subjected to accident, disaster, abuse or any unauthorized modifications including static discharge and power surge. This warranty is offered by the SELLER for its BUYER with direct transaction only. This warranty is void if the warranty seal on the metal housing is broken.

Unit that fails under conditions other than those covered will be repaired at the current price of parts and labor in effect at the time of repair. Such repairs are warranted for 90 days from the day of reshipment to the BUYER. If the unit is delivered by mail, customers agree to insure the unit or assume the risk of loss or damage in transit. Under no circumstances will a unit be accepted without a return authorization number.

The warranty is in lieu of all other warranties expressed or implied, including without limitations, any other implied warranty or fitness or merchantability for any particular purpose, all of which are expressly disclaimed.

Proof of sale may be required in order to claim warranty. Customers outside Taiwan are responsible for shipping charges to and from the SELLER. Cables are limited to a 30 day warranty and cable must be free from any markings, scratches, and neatly coiled.

The content of this manual has been carefully checked and is believed to be accurate. However, The SELLER assumes no responsibility for any inaccuracies that may be contained in this manual. The SELLER will NOT be liable for direct, indirect, incidental, special, or consequential damages resulting from any defect or omission in this manual, even if advised of the possibility of such damages. **Also, the technical information contained herein regarding the SP-3004KG features and specifications is subject to change without further notice.**

SIGNAL MEASUREMENT

